



EPROPA

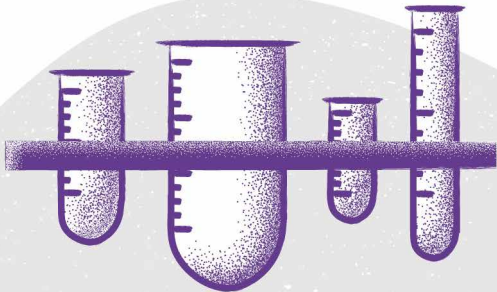
What is EPROPA?

EPROPA (European Program for ROutine testing of Patients with Advanced lung cancer) is a support program designed and promoted by WALCE (Women Against Lung Cancer in Europe) to offer to patients affected by lung tumors, specific tests and possibly personalized treatments.



Why I should participate to EPROPA?

By participating to EPROPA, the biopsy of your tumor will be tested in a specialized laboratory at the University of Turin (Italy). If the performed molecular test will detect specific characteristics on the tumor cells for which, drugs are available, you might be proposed to receive a personalized treatment according to such findings.



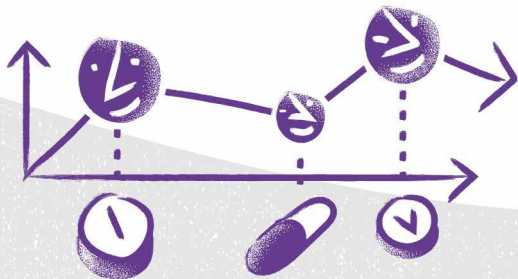
How can I participate?

If your oncologist considers your participation to EPROPA program suitable for your clinical situation, you will be asked to sign an Informed Consent. After this procedure, your biopsy specimen will be sent to the Central Laboratory of the Department of Oncology of the University of Turin (Italy).



Will test results always allow me to receive a specific personalized therapy?

No, but even “negative” tests (e.g. no significant alterations found) might be useful for your oncologist to prescribe the most appropriate treatment for you among the available ones.



What should I do in case of “positive” results?

Whenever the test results show the presence of a specific alteration on tumor cells, your oncologist may prescribe you an already available specific drug or may propose you the enrolment in a clinical trial (in your Country or across Europe).



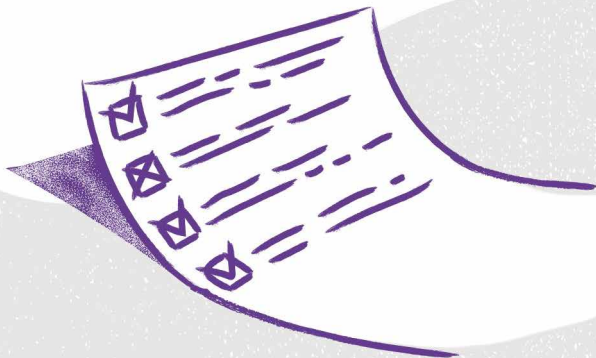
What is a clinical trial?

A clinical trial is a type of research that evaluates the efficacy and tolerability of a specific treatment in a patient population. In the context of lung tumors, targeted drugs directed against specific alterations (evaluated through EPROPA program) are currently being tested to increase the possibility of a personalized cure of this disease.



How can I participate to a clinical trial according to EPROPA results?

Your oncologist will advise you about the availability of clinical trials according to EPROPA test results. In case of long distances to reach hospitals where such studies are available, EPROPA will arrange for the transport and accommodation for you and one of your beloved ones.





PROMOTED BY

ENDORSED BY



SUPPORTED BY UNRESTRICTED GRANTS OF

